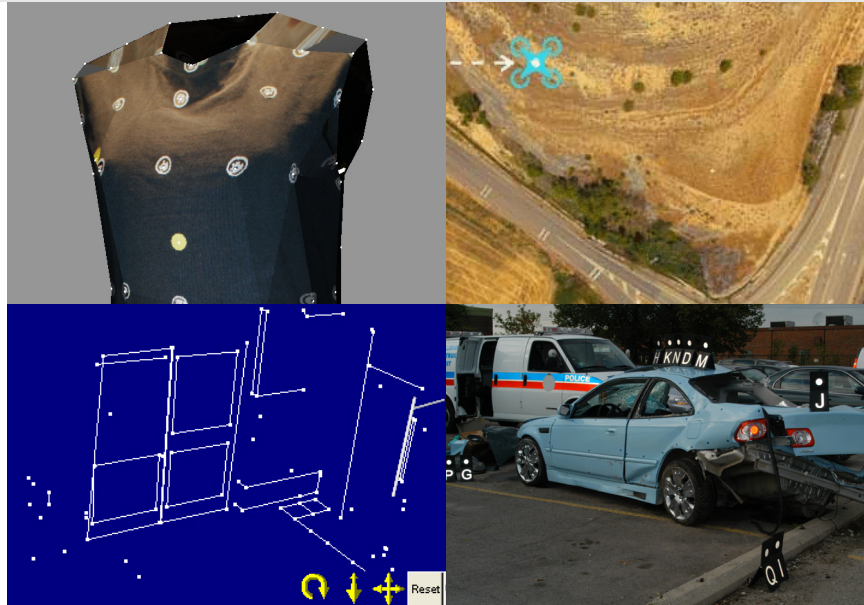




PhotoModeler

The professionals' choice for extracting measurements from photographs for Accident Scene and Forensic Applications.



WHY PHOTOMODELER?



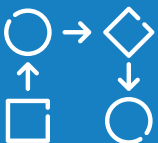
Precise Diagrams



Model 3-D Objects



Perform accurate measurements



Automated workflows

WHAT IS PHOTOMODELER?

PhotoModeler produces accurate drawings, maps, CAD data, 3D models, and remapped photos. PhotoModeler can make your measurement, diagramming, and modeling task faster, more accurate, more practical, and safer. PhotoModeler is a **fast, cost-effective and easy-to-use measurement**.

ACCIDENT SCENE AND FORENSIC APPLICATIONS IN PHOTOMODELER

With PhotoModeler, you can use a camera to **diagram, measure and scan** in accident reconstruction and forensics. PhotoModeler photogrammetry software provides accurate measurement and 3D models for many accident reconstruction and forensic tasks.

PhotoModeler has a long and successful history in forensics and accident reconstruction. PhotoModeler has been used in many court cases, and has successfully passed Daubert and Fryre trials. Use your department DSLR cameras, by-stander cameras, drone uav/cameras, body-cameras, or dash-cameras. Very versatile!



PHOTOMODELER

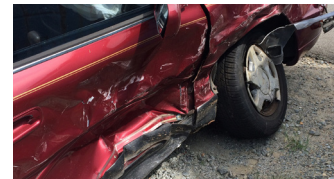


HOW CAN PHOTOMODELER WORK FOR YOU?



Accident Scene Mapping

Create diagrams of current scenes using departmental calibrated cameras, or extract key measurements and diagrams from archived and by-stander uncalibrated cameras. The first is carried out typically by a PD, and the second by an investigation unit or a forensic engineer.



Crush Measurement

The depth of crush for a particular vehicle involved in a crash may be a crucial piece of evidence. PhotoModeler can be used to measure crush by: a) using your own camera with access to the vehicle, and b) from photographs taken by a third party where the vehicle no longer exists.



Crime Scenes

There are a number of uses for photogrammetry in crime scene measurement and reconstruction. SOP for crime scenes is to photograph them, so you can add on diagramming and measurement easily. First responder body-camera video can be used to capture key evidence as well.



Surveillance Video

If a crime is committed in view of a surveillance camera, the video and stills from these cameras are important evidence. PhotoModeler is a tool that performs measurements from images, and can be very helpful in obtaining accurate data. In addition, 3D laser scan data can be loaded to help solve these scenes.

OUR PRODUCTS

PhotoModeler Standard

- 3D Lines
- Simple Surfaces

PhotoModeler Scanner

- 3D Lines
- Simple Surfaces
- Dense Surface Model

PhotoModeler UAV

- 3D Lines
- Simple Surfaces
- Dense Surface Model
- Drone/UAV
- Geographic Capabilities