



# PhotoModeler

The professionals' choice for easy retrofit & remodelling measurements.



## WHY PHOTOMODELER?

Compared to most other accurate field measurement technologies, photogrammetry (or camera-based measurement) has these major advantages:



Little to no specialized equipment



Lower cost



Faster in-field measurement

## WHAT IS PHOTOMODELER?

PhotoModeler produces accurate 2D and 3D models, CAD data, and remapped photos. PhotoModeler can make your measurement, diagramming, and modeling more accurate and more practical. PhotoModeler is a **fast, cost-effective and easy-to-use measurement.**

## RETROFIT AND REMODELING APPLICATIONS IN PHOTOMODELER

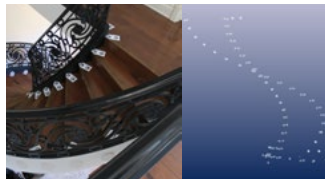
PhotoModeler uses photogrammetry, which creates measurements and diagrams using a normal camera. Instead of having a complex and expensive device to do field measurements for your retrofit or remodeling business, you only need a camera and a tape measure. Some example applications for photogrammetric measure in manufacturing are:

- Measuring kitchens & baths for manufacture and install of counter tops and cabinets.
- Measuring boats for manufacture and install of covers, biminis, decking, and upholstery.
- Measuring stairs for manufacture and install of stair lifts and railings.



# PHOTOMODELER

## HOW CAN PHOTOMODELER WORK FOR YOU?



### Stairs

There are two main applications in measuring staircases in homes and offices. The first is the retrofit of stair lifts, and the second is measuring for more complex banister / railing installation (curved stair cases).



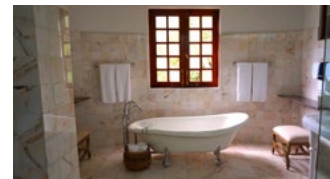
### Kitchen / Bath Counter-tops and Cabinets

Kitchen and bath remodels, or new construction requires accurate measurements of walls shape, dimensions, and placement of existing cabinetry and outlets for complex cabinet and counter-top installs.



### Boat Templating

There are several applications of measurement and modeling needed with yacht and pleasure craft retrofit. Examples are manufacture of full or partial boat covers, biminis, windscreens, complex decking, and upholstery.



### Is PhotoModeler the Tool for You?

If you are in an industry that does retrofits or remodeling with manufacturing at your factory, and you require maximum customer satisfaction while reducing cost, then PhotoModeler software is something to consider!

## OUR PRODUCTS

### PhotoModeler Standard

3D Lines  
Simple Surfaces

### PhotoModeler Scanner

3D Lines  
Simple Surfaces  
Dense Surface Model

### PhotoModeler UAV

3D Lines  
Simple Surfaces  
Dense Surface Model  
Drone/UAV  
Geographic Capabilities